

Ad for Porsche PCCB Rotors of 996TT

History:

- Off a 2003 Porsche 996 Turbo with approximately 60,000 miles
- One track day (6 x 30 minutes sessions) intermediate driver
- Discovered large chip on edge of left front wheel due to rock or some other hazard

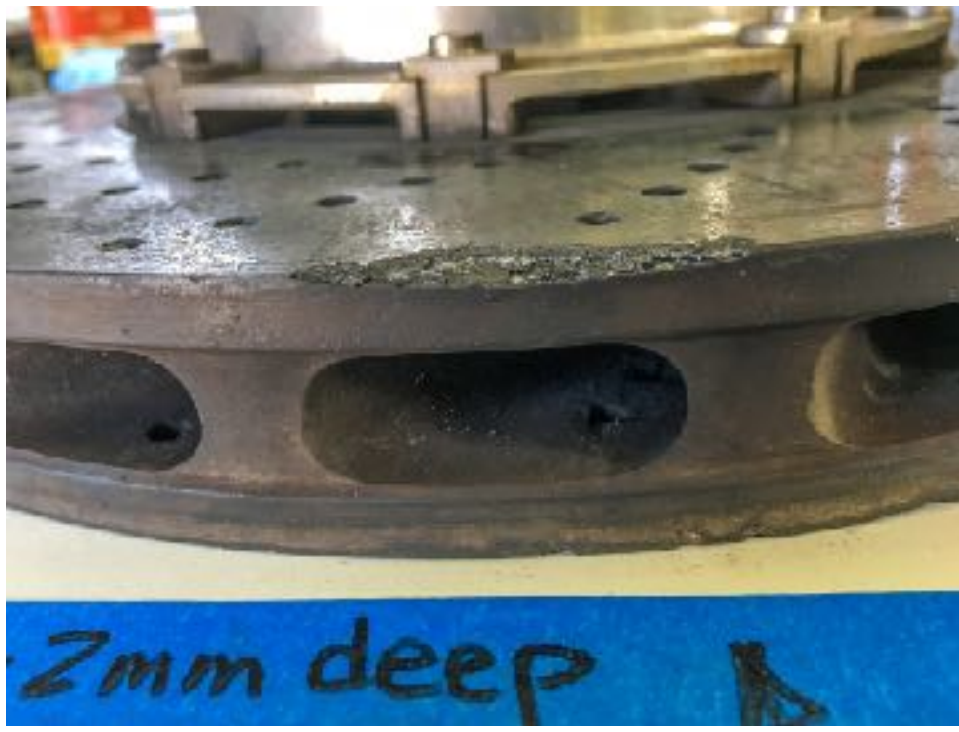
Pictures & Measurements

Left Front Rotor (large edge chip)

P/N 996 351 031 02

Actual Thickness: 33.93mm Limit: 33.5mm







Right Front Rotor

P/N 996 351 032 02

Actual Thickness: 34.10mm

Limit: 33.5mm







Left Rear Rotor

Part Number: 996 352 031 02

Actual Thickness: 28.40mm

Limit: 27.5mm



Right Rear Rotor

Part Number:996 352 032 02

Measured Thickness: 28.02mm Limit: 27.5mm



